



ONE

A Comprehensive Plan for a
Vibrant, Connected and Sustainable City

TACOMA

Informational Event
February 2025



Purpose:

- Provide an update on progress to update the One Tacoma Comprehensive Plan and overview of chapters
- Let you know how to get involved in the Public Comment Period
- Information on other projects

Presentation Outline:

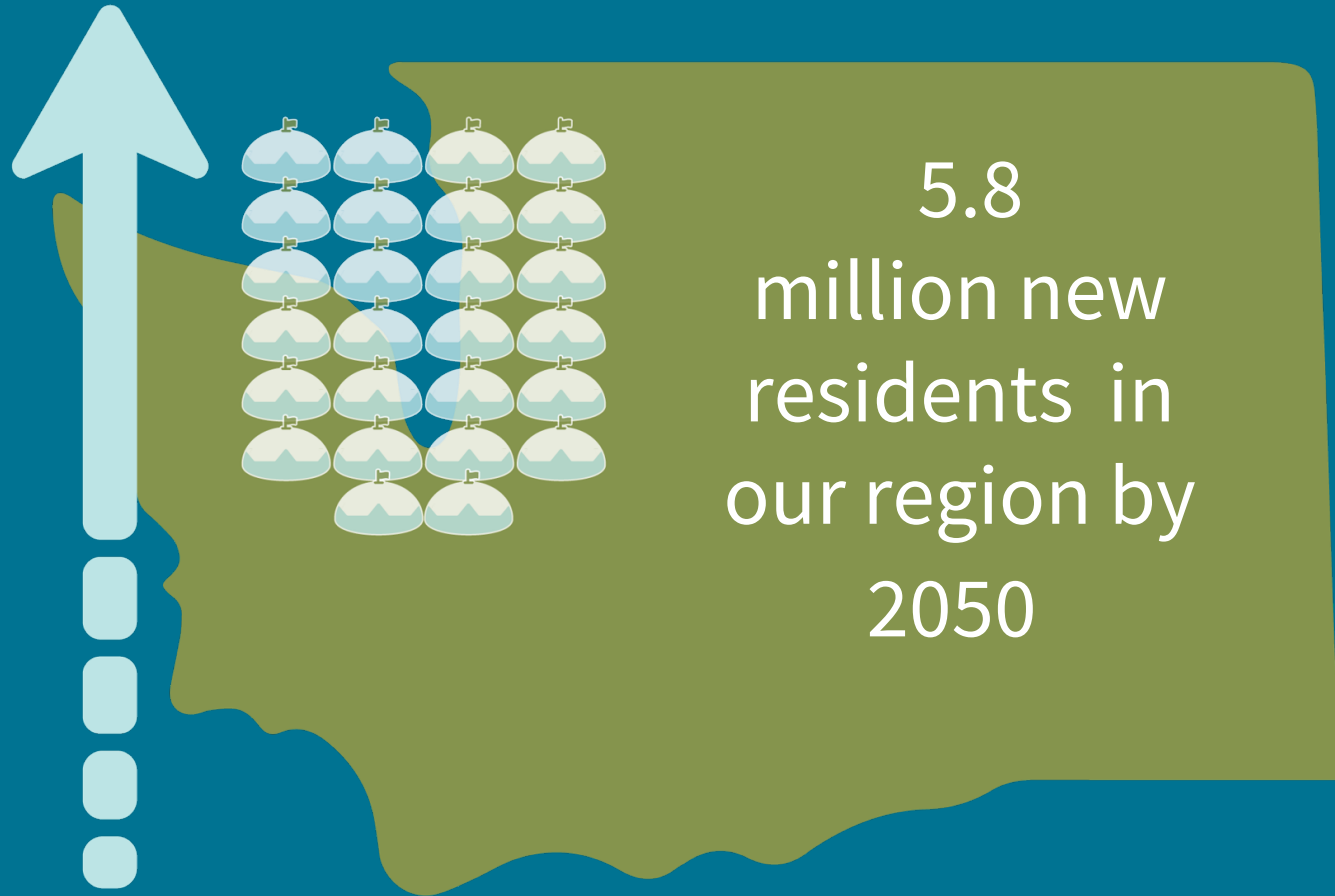
1. Background on the One Tacoma Plan
2. Focus Areas
3. Planning Context
4. Chapter Overviews and Changes
5. Project Timeline and next steps for Comment Period
6. Break
7. Additional Project Updates
8. Break Outs- Connect with Staff

What is the One Tacoma Plan?

- Long-range perspective on topics that address the physical, social, environmental, and economic health of the City.
- It guides decisions on land use, transportation, housing, capital facilities, parks, and the environment.
- Establishes the basis for zoning and development regulations.



What We Are Planning For



137,000
people



60,000
homes



94,000
jobs

Vision and Focus Areas



ONE TACOMA

VISION FOR A 15 MIN CITY

Every Tacoma Resident is a safe short walk, roll, bus, train, or bike ride away from daily essentials and community amenities, such as groceries, schools, parks, and healthcare.



EQUITY

Every resident shares in community progress.



OPPORTUNITY

Neighborhoods where residents can reach their full potential.



PUBLIC HEALTH

Support to maintain healthy minds and bodies.



SAFETY

A place where everyone feels safe to live, work, and play.



SUSTAINABILITY

Achieving climate goals and planning for future Tacomans.

Comprehensive Plan Chapter Updates

Chapter Presentations

- **Element Overview and Goals**
- **Why it matters**
- **Policy Framework**
- **Key changes proposed**

Get to Know the One Tacoma Plan

Growth Strategy

Coordinating housing, transportation, and commercial development can create stronger neighborhoods and a better quality of life.

Complete Neighborhoods

It's important to design neighborhoods that reflect Tacoma's unique identity, cultivate beautiful places, and celebrate our diverse architecture and heritage.

Environment & Watershed Health

Land use policies can protect our natural resources and ensure environmental sustainability for future generations.

Housing

Housing policies help create diverse, accessible, and stable options for residents across different incomes.

Transportation

Transportation policies support growth by making sure everyone can access opportunity, community, necessities, and resources safely and efficiently.

Economic Development

The City is planning to attract 94,000 new jobs by 2050 by designing economic initiatives that support business growth.

Parks & Recreation

Tacoma is committed to preserving and enhancing parks, trails, and open spaces to connect people with their community and environment and improve access for all.

Public Facilities & Services

Effective management of public facilities and services builds trust and meets community needs, ensuring the City provides fair and high-quality services for all.

Historic Preservation

Preservation policies protect Tacoma's historic architecture and cultural sites and contribute to the city's sustainability and economic goals.

Learn More

Visit cityoftacoma.org/onetacoma to review the entire draft One Tacoma plan and submit your comments.



02 Growth Strategy

GROWTH STRATEGY GOALS

- **Goal GS-1** Development, growth, and infrastructure investments support Tacoma's vision for equitable, walkable, connected, and complete communities.
- **Goal GS-2** Neighborhoods across the city include a mix of housing types and integrated commercial activity.
- **Goal 2** The growth strategy and coordinated land use and transportation planning advance the goals of Tacoma's Climate Action Plan.
- **Goal GS-12** Preserve and protect open space corridors to ensure a healthy and sustainable environment and to provide opportunities for Tacomans to experience nature close to home.
- **Goal GS-3** Tacoma's growth is focused in a citywide network of transit-connected centers that anchor 15-minute neighborhoods providing nodes of activity and access to housing, employment, and services.
- **Goal GS-4** Centers serve as the anchors of complete neighborhoods that include concentrations of housing alongside institutions, gathering places, cultural amenities, and green spaces.
- **Goal GS-5** Downtown is Tacoma's largest center with the highest concentrations of housing and employment, transit access, thriving local businesses, and access to arts and culture.
- **Goal GS-7** Crossroads Centers are successful places that serve the needs of surrounding neighborhoods and beyond. They are transit-oriented and contain high concentrations of employment, institutions, commercial and community services, and a wide range of housing options.
- **Goal GS-8** Neighborhood Centers are thriving activity hubs that serve the daily needs of residents, employees, and surrounding neighborhoods.
- **Goal GS-9** Tacoma's employment centers grow and thrive.
- **Goal GS-10** Transit-oriented communities are distributed across Tacoma, supported through equitable transit-oriented development (ETOD), high quality station areas that are accessible and safe, and multimodal integration.
- **Goal GS-11** Transportation planning and investments are coordinated with the Future Land Use Map and Frequent Transit Network Vision Map.
- **Goal GS-14** Annex areas within Tacoma's Urban Growth Area when conditions are appropriate.

• Element Overview

- Foster an equitable system of compact mixed-use and commercial centers across the city to increase access to community services and businesses and create more low- carbon, complete, healthy, and connected neighborhoods.

• Why is this Important

- Design and physical structure of a city has impacts on how people live and get around, creating walkable, safe and accessible communities.

• Big Moves in the draft from current Chapter

- Update population, housing and employment targets and allocate across land use designations.
- Integration with Transportation & Mobility Plan- emphasizing Transit Oriented Development, updating corridors and map policies.
- Integration of Climate Action Plan goals- supporting reduction of GHG through improved public transit, walkability and cycling.
- Focus on neighborhood design and investments needed to create complete neighborhoods.
- Include anti-displacement measures with concentrated growth policies.

03

Complete Neighborhoods

COMPLETE NEIGHBORHOODS GOALS

- **GOAL CN-1** Tacoma's neighborhoods provide a complete, comfortable, enjoyable experience of everyday life for people of all ages and abilities
- **GOAL CN-2** People can move within and throughout Tacoma's neighborhoods with ease and efficiency.
- **GOAL CN-3** Buildings in Tacoma's neighborhoods respond to and enhance the distinctive qualities of its location, while accommodating growth and change.
- **GOAL CN-4** Neighborhood public spaces are welcoming, functional, accessible, and inclusive while responding to local context and community goals.
- **GOAL CN-5** Tacoma's neighborhoods reflect the diverse cultures and heritages that are part of the city and serve as a venue for community creative expression.
- **GOAL CN-6** Tacoma's neighborhoods are sustainable, resilient, and resource efficient, contributing to environmental health.

• Element Overview

- Encourage complete and well-designed neighborhoods that reflect human-scale design, safety and comfort, equitable access to opportunity, resilience, and cultural identity.

• Why is this Important

- Neighborhood design shapes how Tacoma looks and functions for people. Past development, in combination with the natural landscape, has shaped how the city is experienced. Future development, and the treatment of built and natural heritage, has the potential to create a better, healthier, more efficient and more pleasant Tacoma.

• Big Moves in the draft from current Chapter

- Shift focus from buildings and sites to orient policies around broader urban design topics at three key scales of Neighborhood, Site and Public Realm.
- Align with transportation and mobility plan on streets, curb management & Public Realm activation
- Identify connections to transportation, historic preservation, environment and urban form

04 Environment + Watershed Health

ENVIRONMENT + WATERSHED HEALTH GOALS

- **GOAL EN-1** All Tacomans, especially those in historically overburdened communities, have access to clean air and water, and can experience nature in their daily lives.
- **GOAL EN-2** Tacoma's Urban Forest is healthy and expansive.
- **GOAL EN-3** Net gains in environmental health are experienced by all Tacomans, especially those located in historically overburdened communities.
- **GOAL EN-4** Tacoma is a resilient and safe city, with protections in place for communities and properties most at risk from climate events and natural hazards.
- **GOAL EN-5** Black, Indigenous, and People of Color (BIPOC) and historically overburdened communities are protected from climate and environmental health risks and have equitable access to clean, healthy parks, tree canopies, green spaces, waterways, and other natural assets that support well-being and resilience
- **GOAL EN-6** Watershed-scale planning restores and protects natural resources that will maximize the net-gains in ecological functions of Tacoma's environmental assets.

• Element Overview

- Promotes the planning, management, restoration, and preservation of Tacoma's environmental assets, which encompasses the City's natural resources, ecosystems, and the services they provide.

• Why is this Important

- Natural resources provide an array of ecologically, economically, aesthetically, and culturally valuable ecosystem services. Land use plans and investments are instrumental in helping to guide and understand effective approaches to preserving natural resources.

• Big Moves in the draft from current Chapter

- Plan for the watershed scale – connect the environment to daily life
- Highlight health and equity themes, and disproportionate access to environmental assets.
- Address impacts of urban heat island effects and disparities in tree canopy coverage.
- Alignment with Urban Watershed Protection Plan and Stormwater Management, Climate Action Plan and adaptation Strategy, Urban Forest Plan, Puyallup Tribe Comprehensive Plan.
- Add discussion on maximizing multiple benefits of strategies to preserve and increase ecological services.

05 Housing

HOUSING GOALS

- **GOAL H-1** In Tacoma, housing is available and accommodates a full spectrum of needs, preferences, life stages, and financial capabilities. City policies, programs, and incentives encourage the production of housing types and affordability levels that are not being produced in the private market.
- **GOAL H-2** Access to housing is made fairer and more equitable, with a special effort to remove disparities in housing access for Black, Indigenous, and People of Color, low-income households, older adults, and households that include people with disabilities.
- **GOAL H-3** Anti-displacement policies are coordinated to reduce the risk of displacement for at-risk households and mitigate impacts for households that face displacement.
- **GOAL H-4** Across Tacoma, safe and healthy housing provides access to jobs, goods, and services that meet daily needs within a 15-minute walk. This housing is connected to the rest of the city and region by safe, convenient, affordable multimodal transportation.
- **GOAL H-5** All Tacomans can find suitable housing that does not incur cost burden.
- **GOAL H-6** New housing units are low emission, energy efficient, built to high-performance standards, and well-integrated with their surroundings.

• Element Overview

- Implement Tacoma's vision of neighborhoods that are inclusive, offering a range of housing choices and costs and accommodates a broad spectrum of needs.

• Why is this Important

- City plays a role in ensuring a fair and equitable housing market by setting policies that affect the overall supply of housing, the types of housing that get built, and where housing gets built.

• Big Moves in the draft from current Chapter

- Integration of Home In Tacoma and Anti-Displacement Strategy.
- Alignment with Growth Strategy and Integration of new housing targets
- Support 15-minute neighborhoods
- Language Refinement
 - Be specific about affordable housing price points and styles.
 - Avoid subjective terms (e.g., "attractive").
 - Define metrics for equitable distribution of housing.



06 Transportation

- **Element overview**

- Transportation and Mobility Plan is the Transportation Element of the One Tacoma Plan
- The Transportation Element aligns with Tacoma's growth strategy by promoting transit-oriented development and prioritizing infrastructure investments in key growth areas. It aims to create vibrant, walkable communities with integrated transportation options.

- **Why is this Important**

- As Tacoma experiences significant growth, it needs a multimodal transportation system to reduce reliance on cars, increase safety, and improve accessibility for everyone. This system will provide better options for transit, walking, biking, and rolling, ensuring a healthier, more sustainable future for Tacoma.

- **Big Moves in the draft from current Chapter**

- Strengthened priorities around safety, sustainability, equity, and transparency
- Added strategies and actions for modal elements – pedestrian, bike, transit, freight, and auto
- Created two new functional elements: curb management and public realm and activation

07 Economic Development

ECONOMIC DEVELOPMENT GOALS

- **GOAL EC-1** A diverse economic base and robust economy offers Tacomans a wide range of employment opportunities, goods and services
- **GOAL EC-2** Tacomans enjoy increased access to employment opportunities in Tacoma and are equipped with the education and skills needed to attain high- quality, living wage jobs.
- **GOAL EC-3** Tacoma's business culture encourages existing establishments to grow in place, attracts new firms to the city, and supports new homegrown enterprises.
- **GOAL EC-4** The City has a positive business environment and proactively invests in transportation, infrastructure and utilities to grow Tacoma's economic base in target areas.
- **GOAL EC-5** Create a city brand and image that supports economic growth and leverages existing cultural, community and economic assets.
- **GOAL EC-6** Create robust, thriving employment centers and strengthen and protect Tacoma's role as a regional center for industry and commerce.

• Element Overview

- Diversify and expand Tacoma's economic base to create shared prosperity through a robust economy that offers Tacomans a wide range of employment opportunities, goods and services.

• Why is this Important

- As one of five designated Metropolitan Cities in the Puget Sound Regional Council's (PSRC) VISION 2050, Tacoma is planning for 70,800 jobs by 2044.
- Strategically attract and grow businesses to increase the number of jobs in the city and deliberately channel growth into areas suited to accommodate growth.

• Big Moves in the draft from current Chapter

- Address displacement of businesses due to redevelopment/market pressures.
- Promote environmental and socially responsible business practices.
- Integrate Green Economy Strategy
- Add additional policies specific to the City's employment centers and Industrial Districts and Manufacturing/Industrial Centers.

08 Parks + Recreation

PARKS + RECREATION GOALS

- **GOAL P-1** All Tacomans have safe, convenient, and equitable access to high-quality parks, natural areas, trails, and recreational opportunities within a 10-minute walk.
- **GOAL P-2** The physical, mental, emotional, and social health of Tacomans of all ages and abilities is supported through spending time outdoors and in public spaces. In particular, youth experience socio-emotional development and a stronger sense of belonging through recreational programming.
- **GOAL P-3** Public and private partnerships expand the variety of community services and programs, provide open space, and enhance quality of life.
- **GOAL P-4** Long-term planning efforts maintain and expand Tacoma's parklands and facilities to ensure quality service for current and future populations.
- **GOAL P-5** The development and operation of park and recreational facilities responds to the needs of the site and of the community.
- **GOAL P-6** Tacomans can connect with nature in well-managed natural areas. Urban forests and natural areas protect the unique habitat and biodiversity of Tacoma.
- **GOAL P-7** Neighborhood and community parks serve the diverse needs of the Tacoma community within a safe, 10-minute walk. Areas identified as underserved are prioritized for future investments in new and improved parks and trails.
- **GOAL P-8** Urban parks serve the diverse needs of the Downtown and Regional Growth Center communities.
- **GOAL P-9** Regional parks serve the region's diverse needs and attract visitors from across the Puget Sound.
- **GOAL P-10** Community gardens serve the diverse needs of residents and play a role in addressing food insecurity.
- **GOAL P-11** A connected and well-maintained network of trails offers safe and beautiful corridors for walking, biking, and rolling across Tacoma.
- **GOAL P-12** The public shoreline and waterfront system is well maintained, balancing needs for environmental sustainability and public access and fostering a sense of connection between the community and the water.
- **GOAL P-13** Opportunities for education and continuous learning about Tacoma's environment assets and geographic setting are widely available.
- **GOAL P-14** Site-specific plans and subarea plans guide the unique needs of certain facilities and sites.

• Element Overview

- Set clear standards for service delivery and improvements to parks and recreation facilities and services.
- Achieve interagency and intergovernmental coordination in the provision of park and recreation facilities.

• Why is this Important

- Parks are essential assets that connect people, promote health and wellness, encourage early childhood development, build community connections, and contribute to resilience and ecological health.

• Big Moves in the draft from current Chapter

- Align with Parks Tacoma Strategic Plan update, which includes an increased focus on youth and programming
- Update the inventory map to reflect current conditions.
- Explore school partnerships to enhance access and experience for community members.
- Walkable access as a key metric- adapt to a new 10-minute walkshed standard
- Create stronger ties to public health and highlight cultural and demographic needs

09

Public Facilities + Services

PUBLIC FACILITIES + SERVICES GOALS

- **GOAL PFS-1** Ensure public facilities and services for future development and growth equitably meet or exceed the levels of service standards established by providers.
- **GOAL PFS-2** Address past deficiencies and rectify gaps in service, particularly in underserved areas, to ensure all Tacomans benefit from City services.
- **GOAL PFS-3** Maintain public facilities to ensure community members can access services that are safe and reliable.
- **GOAL PFS-4** Ensure that planned public facilities are financially feasible.
- **GOAL PFS-5** Invest in public facilities and services that foster a just, equitable, and resilient Tacoma for all residents.

• **Element overview and goals**

- Makes the rest of the plan a reality by identifying infrastructure investments that support and implement many of the goals and policies in other elements of the Plan
- Goals for service delivery and system expansion for public rights-of-way, wastewater and stormwater systems, water, parks and recreation, public safety and emergency response, solid waste management, school facilities, technology access, and energy infrastructure.

• **Why is this Important**

- Fulfills the GMA requirements for capital facilities and utilities
- Support the equitable, efficient, and adaptive management approaches that are needed to provide high-quality and reliable facilities and services now, and in the future.

• **Big Moves in the draft from current Chapter**

- Update to capital project prioritization criteria
- Process for review of Level of Service standards
- Integrate equity, community engagement and involvement, and co-benefits of infrastructure investments into policies.

10 Historic Preservation

HISTORIC PRESERVATION GOALS

- **GOAL HP-1** Tacoma is a livable community with a strong sense of history. Innovative policies and procedures build upon a depth of knowledge about the history of Tacoma and its residents
- **GOAL HP-2** Preservation efforts support Tacoma as a sustainable community and help the City meet its climate goals
- **GOAL HP-3** Historic resources are integral features of the public realm. Historic properties are well managed and maintained
- **GOAL HP-4** Historic review processes are efficient, and the Landmarks Preservation Commission operates in a transparent manner
- **GOAL HP-5** The preservation ordinance and other related codes are clear, easy to interpret, and they reflect the goals of the preservation program
- **GOAL HP-6** Incentives and benefits support appropriate rehabilitation and continued use of historic resources
- **GOAL HP-7** The preservation of Indigenous history and significant sites are prioritized in Tacoma's historic preservation program
- **GOAL HP-8** Historic Preservation initiatives originate from community organization advocacy. The Department communicates clearly with implementation groups and fosters positive relationships with community partners
- **GOAL HP-9** Tacoma's Historic Preservation Program fosters equitable growth and anti-displacement efforts
- **GOAL HP-10** The Historic Preservation program protects more places of significance to underrepresented communities

• Element Overview

- Defines the City of Tacoma's preservation goals, policies, and actions for preservation and neighborhood conservation.
- Provides a framework for other groups and organizations engaged in community-based initiatives with interests in protecting and experiencing cultural resources.

• Why is this Important

- Provides guidance for the development of tools, regulations, and incentives to ensure that future development is balanced with the protection and enhancement of important cultural and historic sites.

• Big Moves in the draft from current Chapter

- Connect Historic Preservation to equitable growth, neighborhood change, and addressing cultural needs of existing and new residents, particularly for the Black community and other underrepresented groups.
- Remove redundancy and siloed policies that have related policies elsewhere in the plan.
- Revise nomination process and management for local historic districts
- Improve treatment of Tribal concerns
- Incorporate recommendations for code updates anticipated in 2025

11

Engagement + Administration

ENGAGEMENT + ADMINISTRATION GOALS

- **GOAL AD-1** Engage the Tacoma community equitably in planning for future projects and decisions in a coordinated, inclusive, and safe manner, prioritizing the empowerment of historically under-served and under-represented groups—as identified in this Plan’s Community Profile.
- **GOAL AD-2** Build and sustain community partnerships and programs to enhance capacity, improve engagement effectiveness, and strengthen trust between the government of Tacoma and communities that have historically been marginalized in public processes.
- **GOAL AD-3** Ensure that City decision-making processes are clear and transparent to all, including traditionally under-served and under-represented groups such as youth and BIPOC, as identified in this chapter’s Community Profile.

• Element Overview

- Conduct engagement efforts that increase the community’s meaningful participation in decisions that shape Tacoma’s future
- Build trust and foster positive relationships between community members and the City.
- Set expectations about when and how to conduct engagement

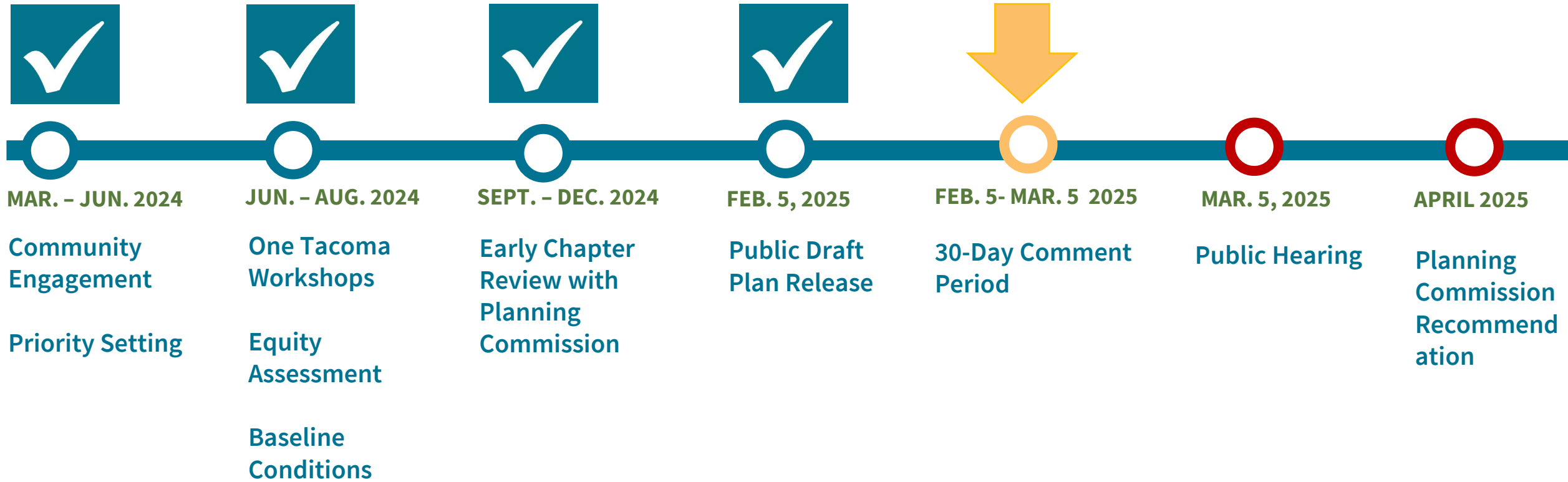
• Why is this Important

- Improve relationships with traditionally under-represented and under-served groups, including low-income communities and communities of color create and work towards a shared vision for the future.
- Create and work towards a shared vision for the future.

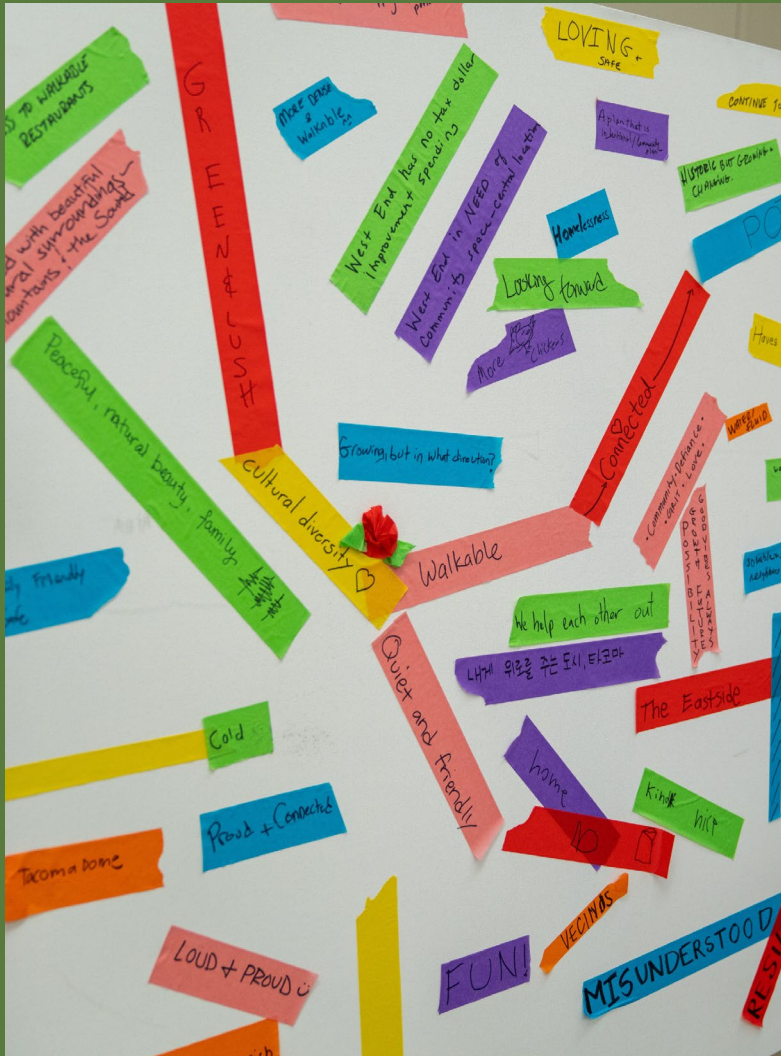
• Big Moves in the draft from current Chapter

- Highlight and bolster programs and polices like Language access, youth engagement BIPOC, Diversity Equity Inclusion (DEI) and accessibility.
- Identify policies to reduce barriers to engagement implementation
- Include trauma- informed engagement, healing, reconciliation, trust/transparency
- Align existing City efforts- consistent and robust city-wide engagement
- Build capacity among staff and within communities to plan together

Project Timeline



Join the Conversation



Public Hearing

Wednesday, March 5, 2025, at 6:00 p.m.

- In-person at City Council Chambers, 747 Market St. or on Zoom
- Provide oral comments during the public hearing on Wednesday, March 5, 2025
- Submit written comments to planning@cityoftacoma.org or mail comments to: Planning Commission, 747 Market Street Room 345, Tacoma, WA 98402 by

Friday, March 7, 2025, at 5:00 p.m.

Subscribe to e-newsletter

Follow on social media

Email us at onetacoma@cityoftacoma.org

Online cityoftacoma.org/onetacoma

ONE TACOMA



Break

Using the Comprehensive Plan

1. Comprehensive Plan (Citywide Vision & Policy)

- Long-term guide for land use, growth, housing, transportation, and economic development

2. Subarea Plans (District or Corridor-Level Planning)

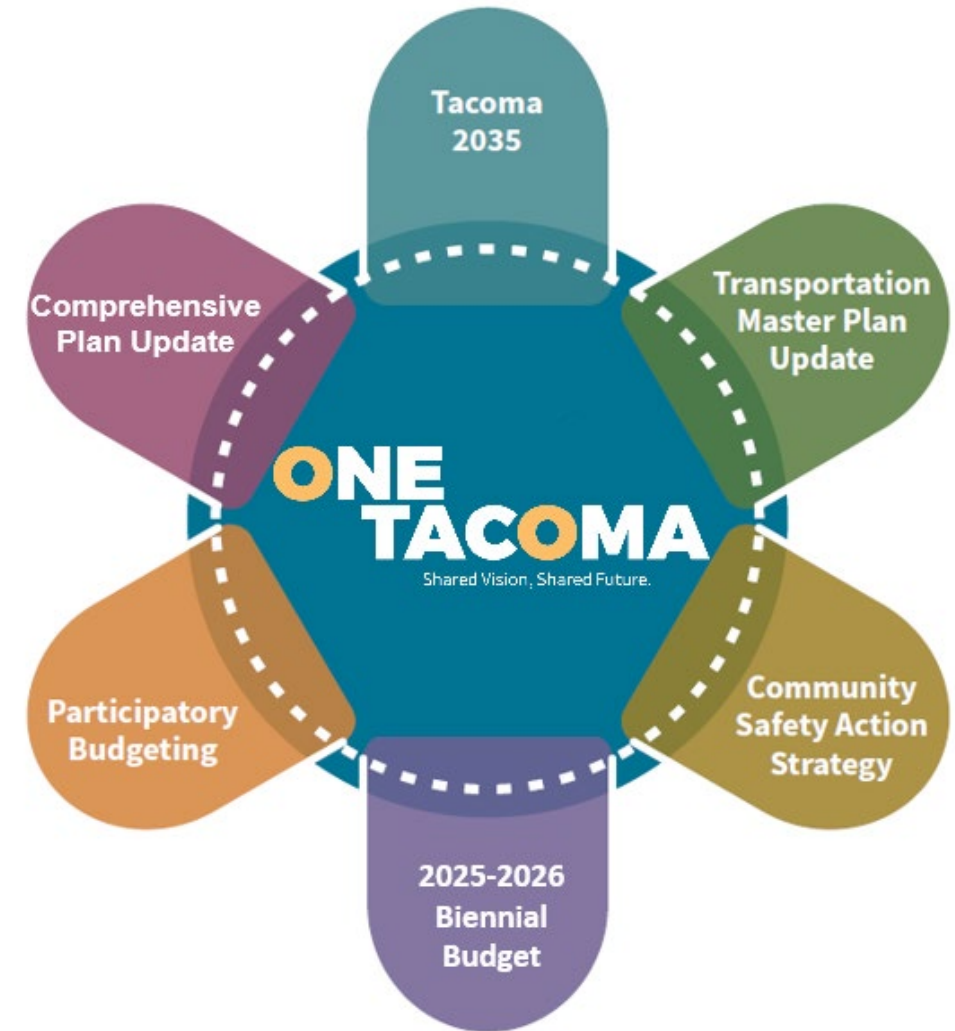
- Provides more detailed strategies for specific areas like downtown, waterfronts, or transit hubs
- Implements citywide policies with detailed zoning and infrastructure strategies

3. Neighborhood Plans (Community-Focused Planning)

- Applies Comprehensive Plan policies at a smaller, community level
- Focuses on local character and resident priorities within individual neighborhoods

4. Zoning Overlay Districts (Special Area Regulations)

- Converts the Comprehensive Plan's vision into enforceable land-use regulations
- Applies additional zoning rules to specific areas to support unique policy goals
- Example: Restrict development in aquifer recharge areas to protect groundwater



Minor Plan and Code Amendments

2025 Annual Amendment to the Comprehensive Plan and Land Use Regulatory Code

- Set of potential amendments to Land Use Regulatory Code being considered along with the 2025 One Tacoma Comprehensive Plan periodic update
- Identified by staff, customers of the Planning and Development Services Department, the Planning Commission, the Transportation Commission, the City Council, and/or the public.

The 2025 Annual Amendment package

- Consists of 12 items: code enforcement, pedestrian streets, split zoning, retail marijuana limits, and others
- Proposed amendments to the Tacoma Municipal Code (TMC) Title 13 – Land Use Regulatory Code
- Information about proposed amendments at www.cityoftacoma.org/codeamendments

Next Steps

- Planning Commission Public Hearing - **March 5th, 2025**
- Attend in Person or via Zoom
- Provide comments by **March 7th, 2025**

Tideflats Subarea Plan

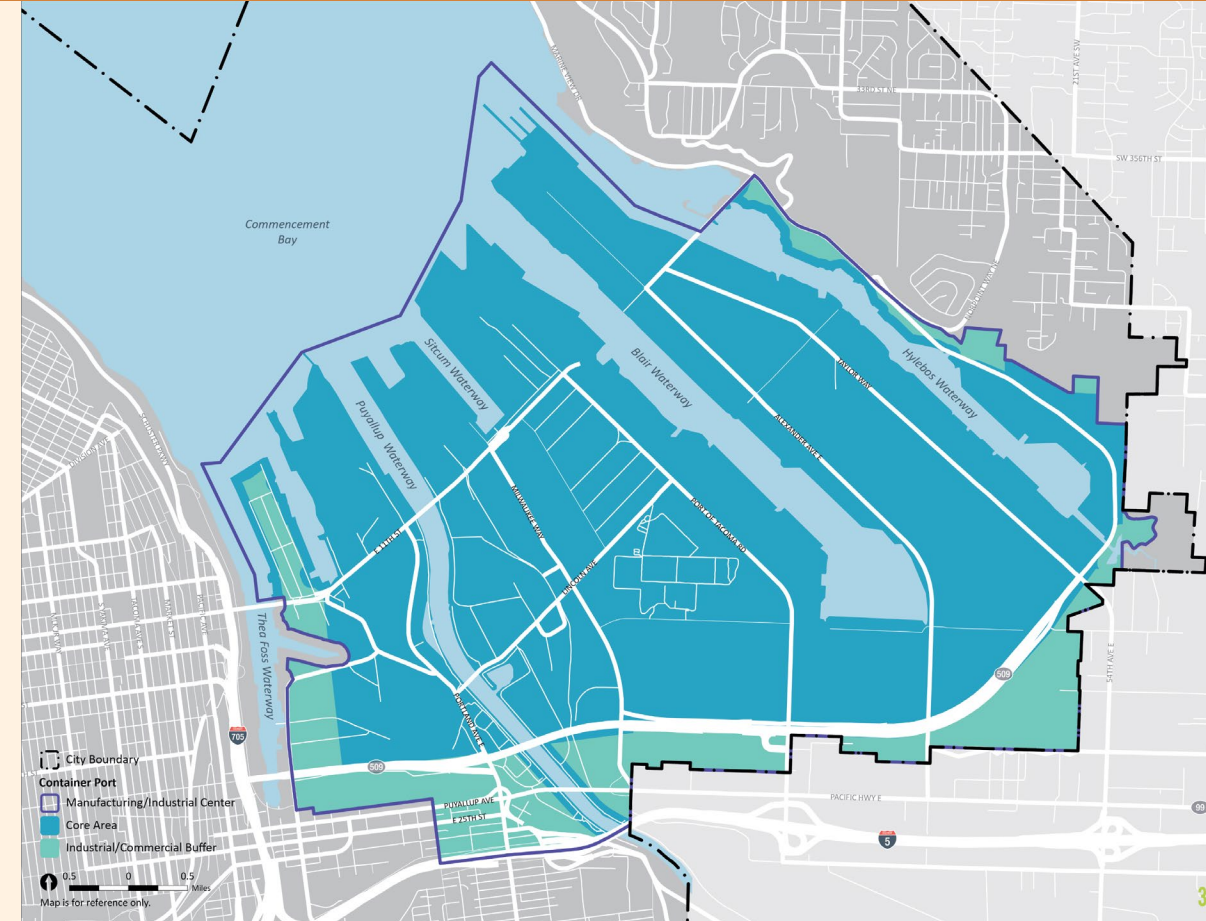
**Current Status: Steering Committee Draft;
New Zoning Districts under development**

Project Deadline: End of 2025 Adoption

- Work Plan includes a commitment for a 45-day public comment period whenever new amendments are introduced.
- Draft Plan available at www.cityoftacoma.org/tideflatsplan

Next Steps:

1. February: Planning Commission Intro; City Council Study Session; One Tacoma Open House Events
2. March 19: Public Release for Comment
3. April 16: Public Hearing
4. Tentative June 4: Planning Commission Recommendation



Pacific Avenue Subarea Plan

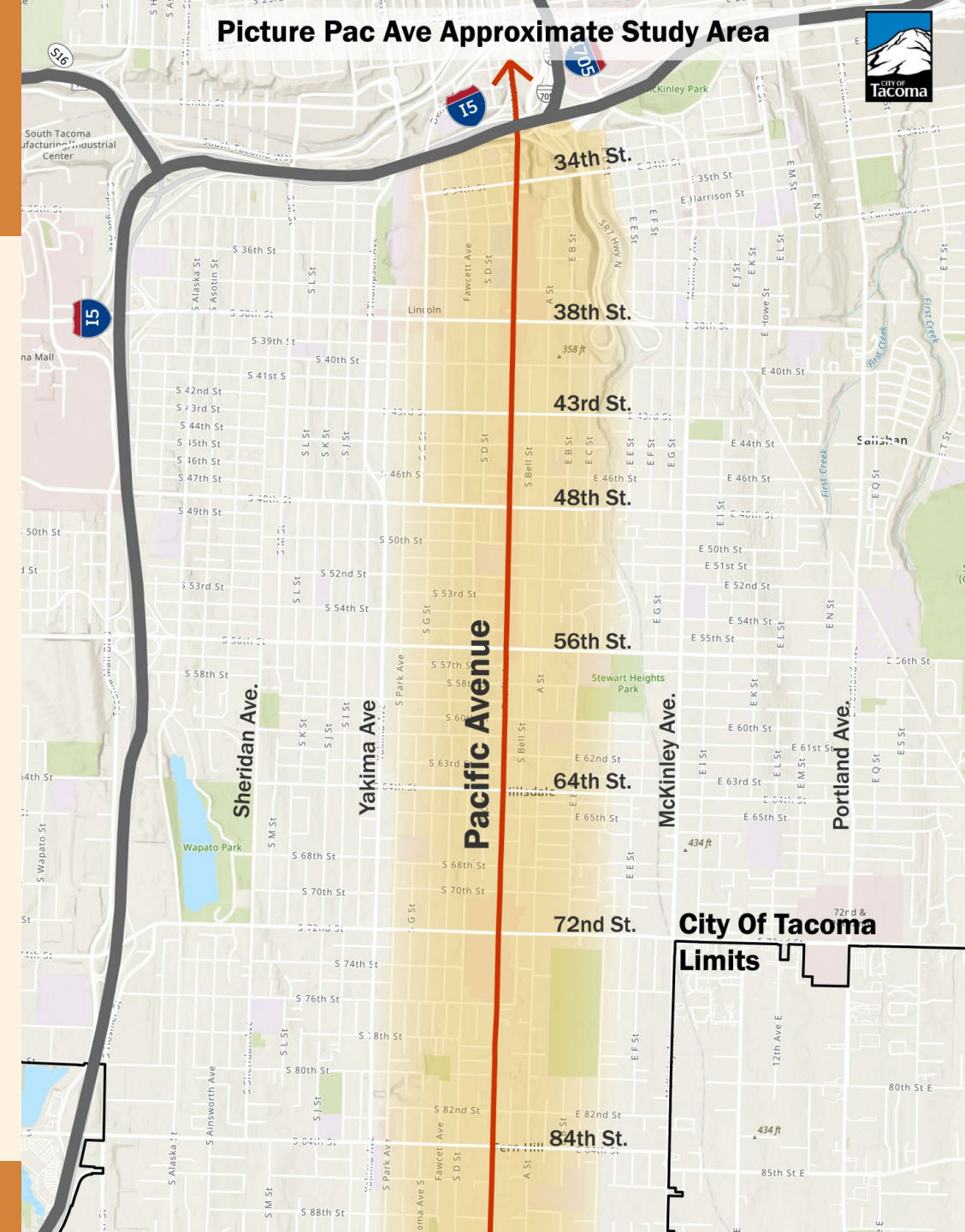
Project Deadline: Goal is to complete by the end of 2025

Current Status:

- Coordination with Citywide traffic modeling
- Finalizing alternatives and conducting land use analysis
- Developing Draft Policy Framework
- Project updates at cityoftacoma.org/PicturePacAve

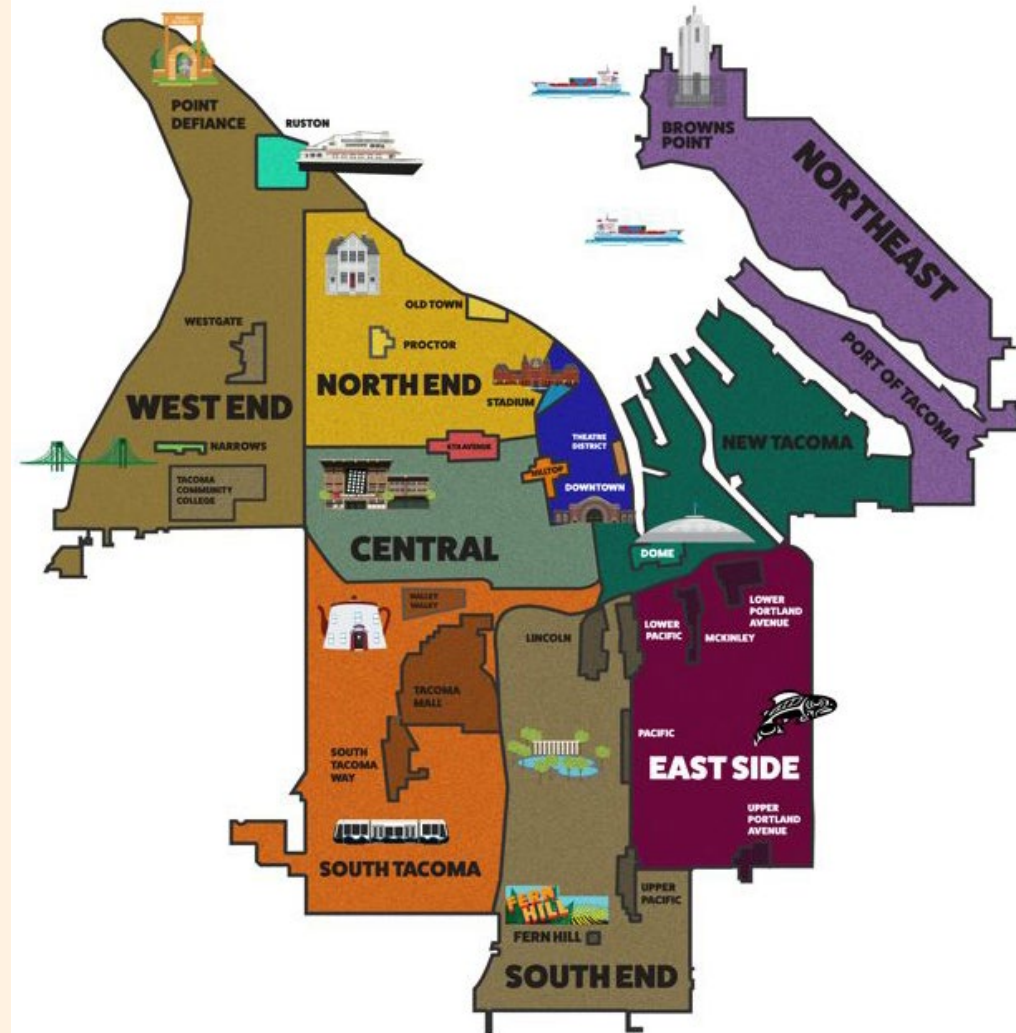
Next Steps:

1. Planning Commission and City Council Briefings/updates
2. Re-engage the Public Advisory Committee
3. Late Spring/Early Summer for Draft Plan and DEIS Release



Neighborhood Planning

- Created by City Council in 2021 to identify a vision for the future, with actions ranging from short- to long-term projects, are aligned with other City programs and policies.
- **18-month process**, including extensive community engagement, to identify a vision and create recommendations and goals.
- **City Council** adopts the plan
- Work with other departments and organizations to **identify resources** to support implementation
- Neighborhoods:
 - Mckinley Hill
 - Proctor
 - South Tacoma



Neighborhood Planning

South Tacoma Neighborhood Plan

Draft Goals and Actions include:

- Implement Road Safety Audit
- Increase tree canopy
- Improve air quality
- Preserve landmark buildings
- Creation of Business Improvement Area
- Programs and spaces for youth and seniors
- Support affordable housing opportunities

Next Steps

- Work with Planning Commission and City Council to **adopt plan** (anticipated June 2025)
- Work with **neighborhood Steering Group** to plan for implementation
- Coordinate with implementation partners to **move forward key actions**
- The Neighborhood Planning Program will sunset in **July 2025**, but once adopted, the Plan will still help to guide our work

South Tacoma

Neighborhood Plan

City of Tacoma



DRAFT February 2025

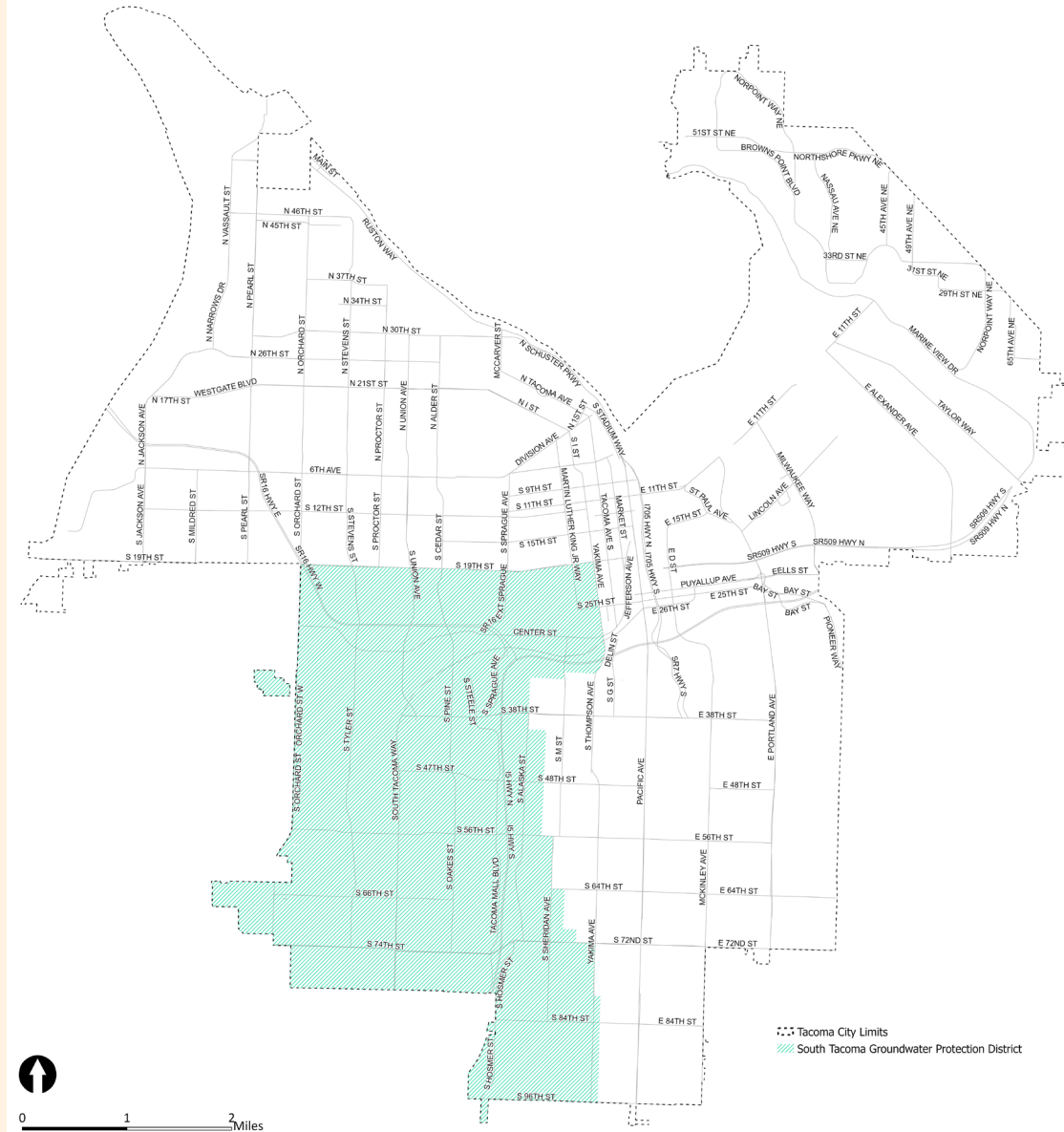


South Tacoma Groundwater Protection District

- Created in 1988 as an overlay zone to protect aquifer drinking water from contamination.
- Tacoma is required by the GMA to review and if necessary, update STGPD regulations every ten years.

Potential Code Amendments

- **High-Impact Uses:** Refining the list of prohibited uses.
- **Stormwater Infiltration:** Strengthening stormwater treatment and permitting processes.
- **Impervious Surface Standards:** Enhancing practices to improve aquifer recharge.
- **Landscaping and Tree Canopy Standards:** Updating requirements for Industrial zones, South Tacoma Manufacturing Industrial Center (STMIC) & Tacoma Mall Regional Growth Center.
- **Boundary Adjustments:** Revising boundaries for Critical Aquifer Recharge Area (CARA) and STGPD.
- **Code location:** Evaluating whether regulations should be placed within STGPD or CARA.



Next Steps:

- Upcoming Meetings:
 - **April 2, 2025:** Review consultant recommendations & **release draft code** for public review and comment
 - **May 7, 2025:** Public hearing on the draft code
 - **June 18, 2025:** Planning Commission's recommendation
 - **June – September 2025:** Legislative process and code adoption by the City Council

Ways to Provide Feedback:

- Come & talk to us after the presentation
- Email planning@cityoftacoma.org
- Attend a Planning Commission meeting
- Participate in the Planning Commission or City Council public hearing

Additional Project Information: www.cityoftacoma.org/stgpd

Stormwater

Stormwater Management Program and Stormwater Design Manual are being updated

- Major Changes include:
 - Engaging with overburdened communities
 - New tree canopy goals and policies
 - New practices for controlling pollutants
 - Stricter water quality treatment for new construction
 - Requirement for more regional stormwater facilities and habitat protection projects
 - New street sweeping guidance, strategies to address climate change

Provide Thoughts and feedback

- Fill out short survey by March 21st
- Review the draft and provide comments online at www.cityoftacoma.org/stormwater
- Email swmupdates@cityoftacoma.org



Stormwater

Stormwater Comprehensive Plan

- Tool used by stormwater utilities to establish a long-range Plan which helps strategically manage our stormwater assets into the future.

Why we need a Plan

- Addresses aging Stormwater Pipes & System, Population Growth & More Housing, Future Stormwater Regulations and aligns with City Initiatives & Environmental Services (ES) Goals

Step 1 // Gather
Current Program
Information

Step 2 // Develop &
Assess Solutions

Step 3 // Implement
Plan &
Recommendations

- Outreach beginning **late Spring/Summer**



Community Safety Action Strategy

In Tacoma, we collaborate to make healthy and vibrant neighborhoods and places where everyone can feel safe. We invest in people and prevention to create a sense of belonging. We provide effective response with care and respect to many different community safety needs. We support healing and repair, helping everyone thrive together



Co-create Safe PLACES and Neighborhoods



Support PEOPLE and Prevention



Provide Effective RESPONSE with Care



Promote Healing and REPAIR

Community Safety Action Strategy



- Builds a shared **community-wide vision** of community safety
 - Identifies key issues important to perceptions of safety in Tacoma, including how residents experience safety differently
 - Leads with antiracism and equity



- Describes how key **City actions** address the community vision
 - Aligns City actions with existing plans and strategies for a cohesive, strategic approach



- Identifies gaps in addressing the community vision, providing recommendations for how those gaps might be addressed through program, policy, partnership, and platform



- Update will be shared at a study session of the Tacoma City Council before reconnecting with community in **Summer 2025**.

ONE TACOMA



Break Outs